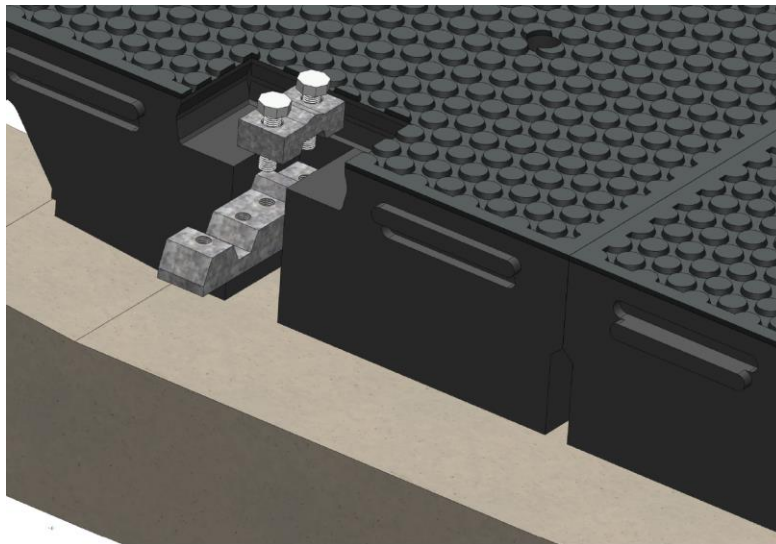


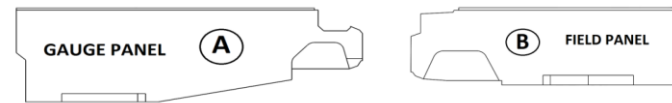
LINK Crossing System



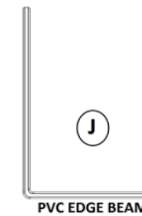
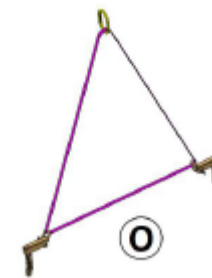
Installation Guide

LINK SYSTEM COMPONENTS LIST.

PANELS



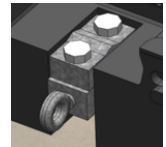
LIFTING PIN KIT



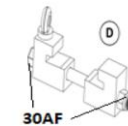
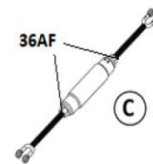
LINK CONNECTOR



H LINK END CONNECTOR



END RESTRAINT & RAIL CLAMP KIT



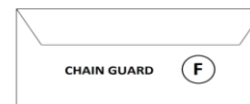
BOLT & NUT



RUBBER PLUG



CHAIN GUARDS



DOUBLE COVER

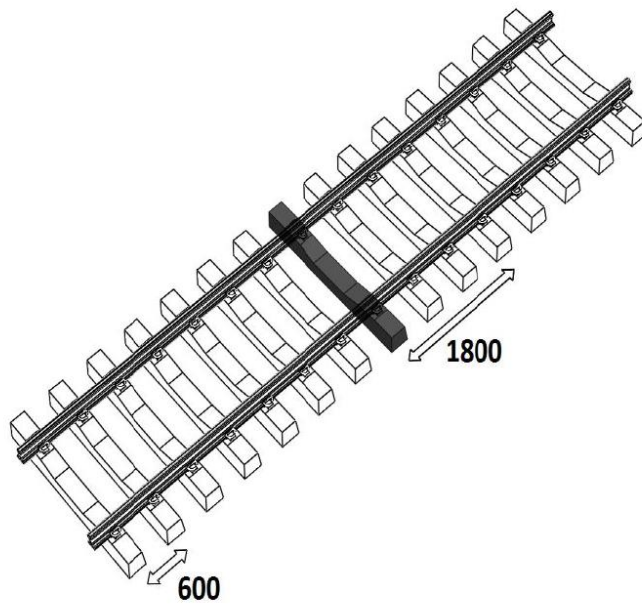


END COVER



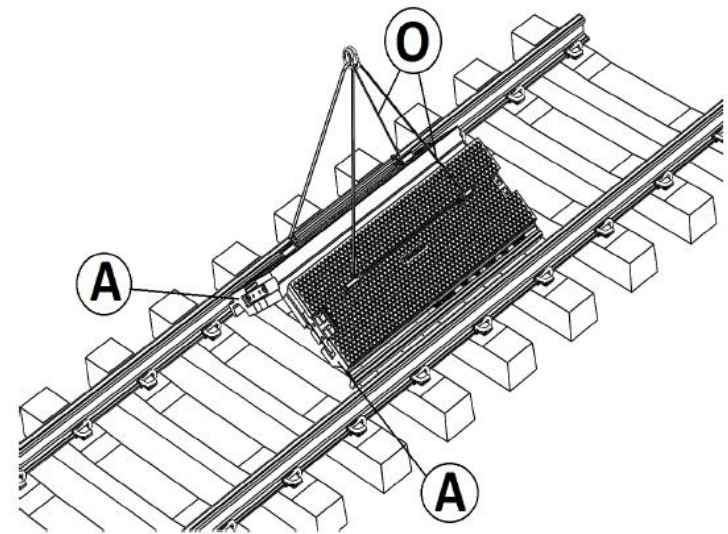
1

- Locate the centre of the crossing.



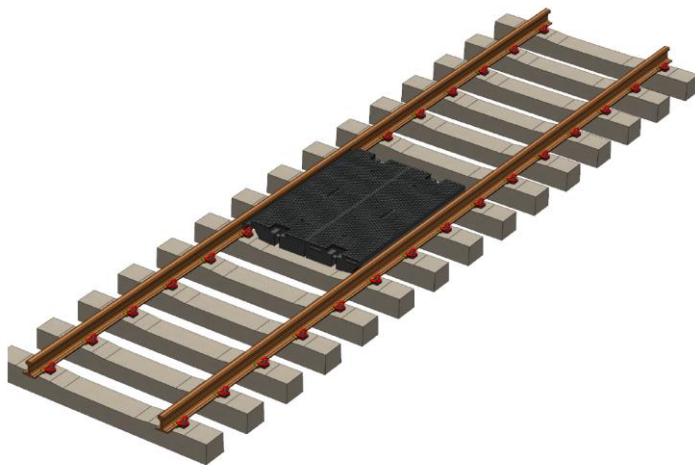
2

- Lift Gauge Panels “A” using Lifting Pins “O”, in pairs



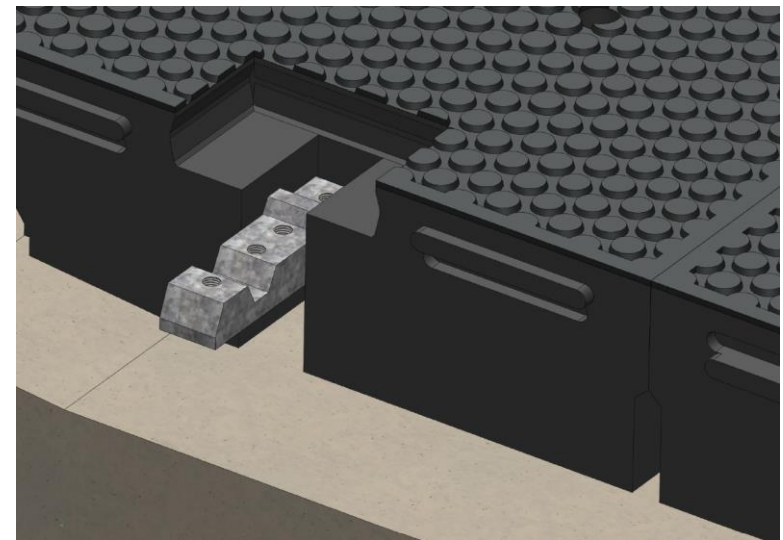
3

- Place Gauge panels between rails ensuring there is a sleeper supporting the ends of the panels.



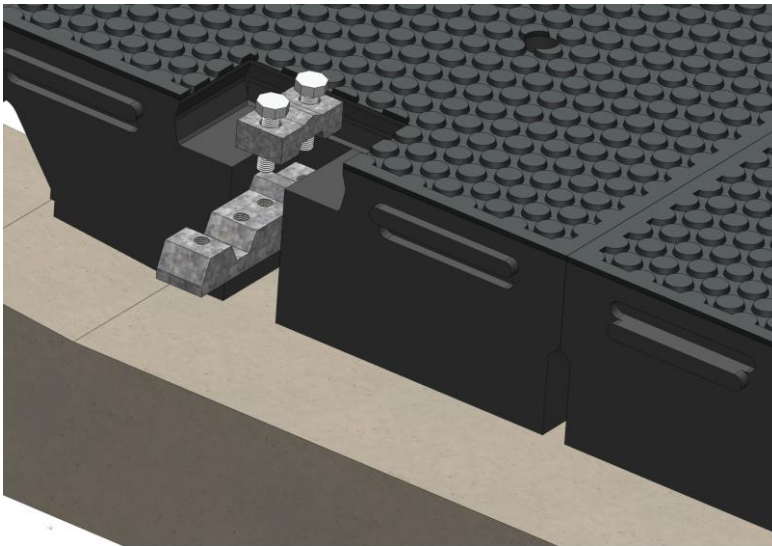
4

- Present the main body of the LINK Connector “G” to the panel



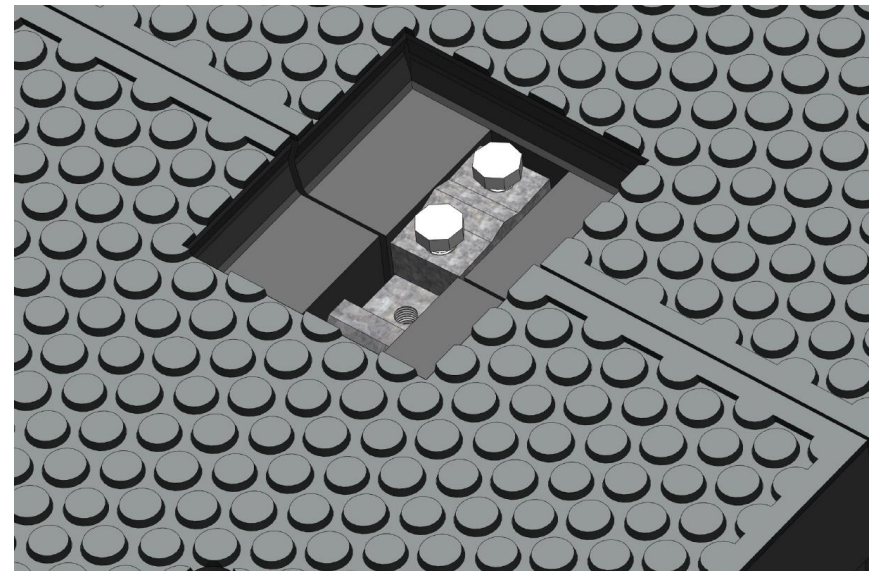
5

- Place cover and turn bolts 4-5 turns into the body of the LINK Connector.



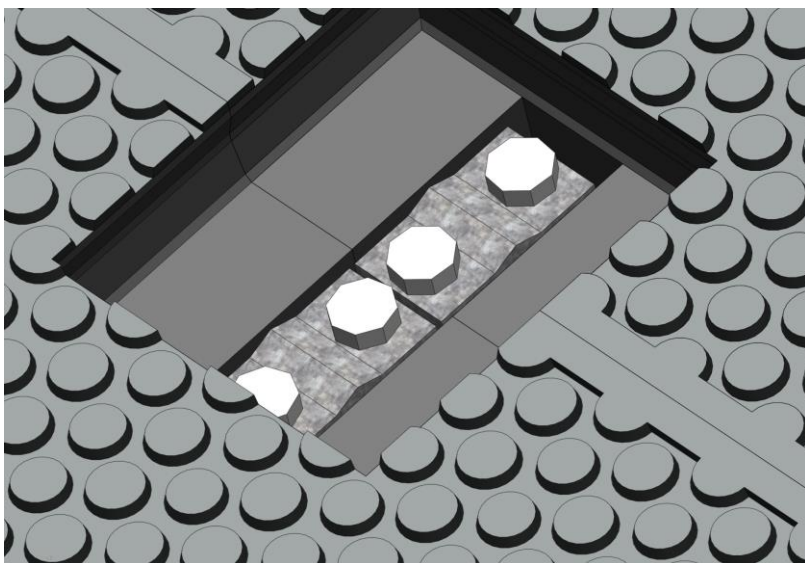
6

- Present the next pair of Gauge Panels onto the main body of the LINK Connector.



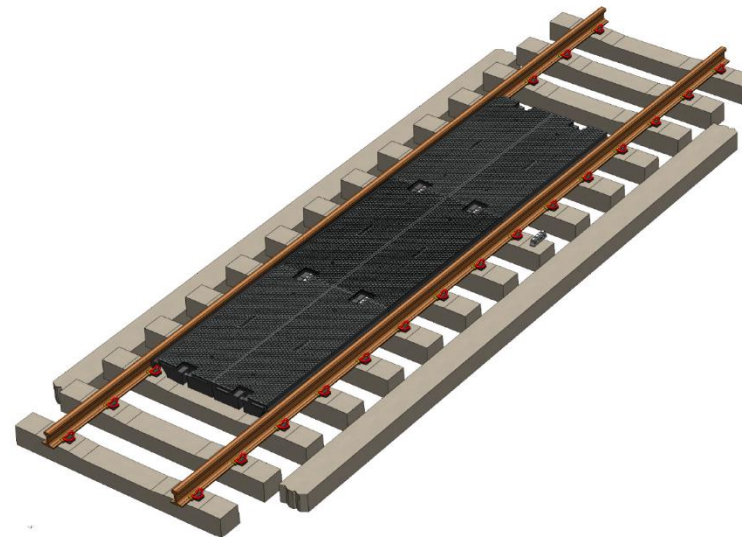
7

- Place remaining cover and x2 bolts over the body of the LINK Connector.
- Tighten all 4 Bolts to Torque Setting 215Nm.



8

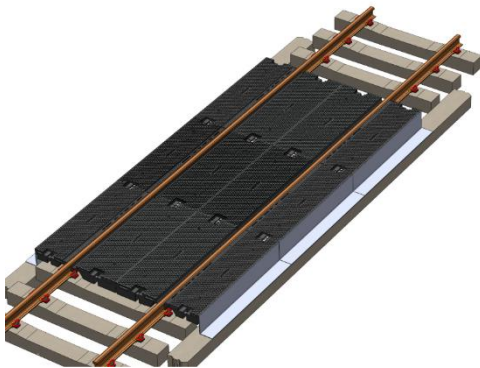
- Repeat Steps 3 to 5 until all the Gauge panels of the crossing have been installed.
- Prepare the ground for the Edge Beams, recommended 300mm compacted dry mix concrete.



9

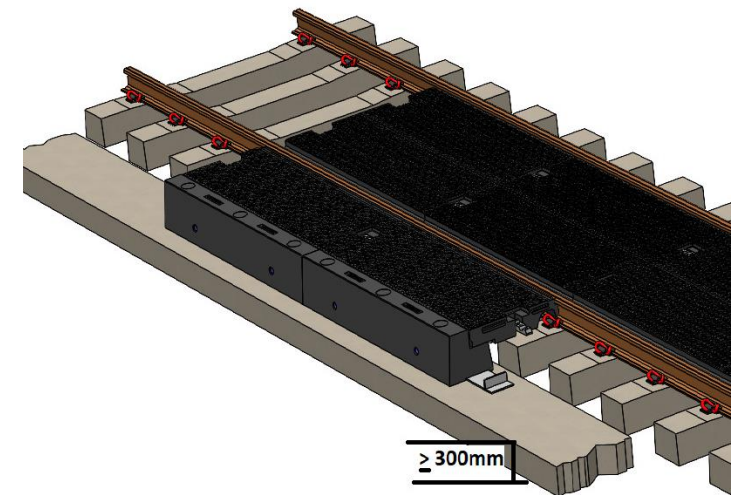
Plastic and / or Steel Edge Beams

- Install individually the Field Panels “B” working once again from the centre of the crossing, repeating Steps 3 to 5 until all the Field Panels of the crossing have been installed.
- Pack C50 dry concrete mix to the correct height for the Edge Beam
- **9.a.1 - Plastic Edge Beams** Screw the Plastic Edge Beams to the sides of the panels and fill with dry mix concrete.
- **9.a.2 - Steel Edge Beams** Push the Steel Edge Beam against the Field Panels and fill with dry mix concrete.



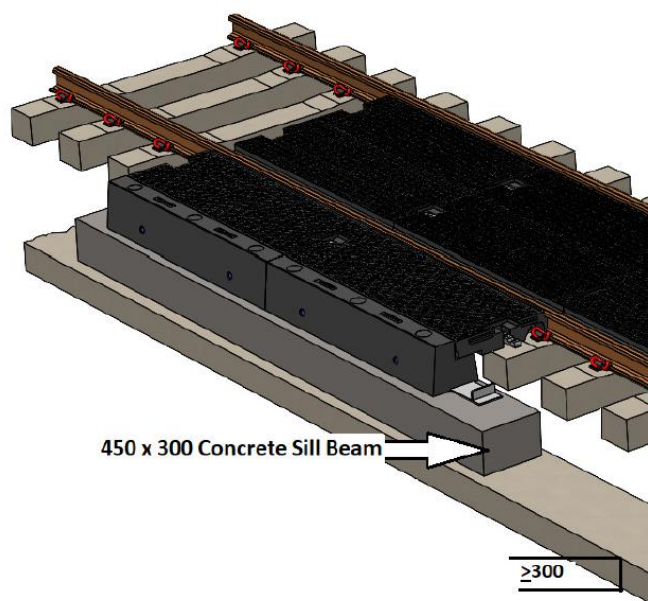
9.b. Rubber Edge Beam

- Measure the distance and height for the $\geq 300\text{mm}$ C50 dry concrete mix to locate the correct positioning of the Rubber Edge Beam.
- Install individually the Field Panels “B” working once again from the centre of the crossing, repeating Steps 3 to 5 until all the Field Panels of the crossing have been installed.

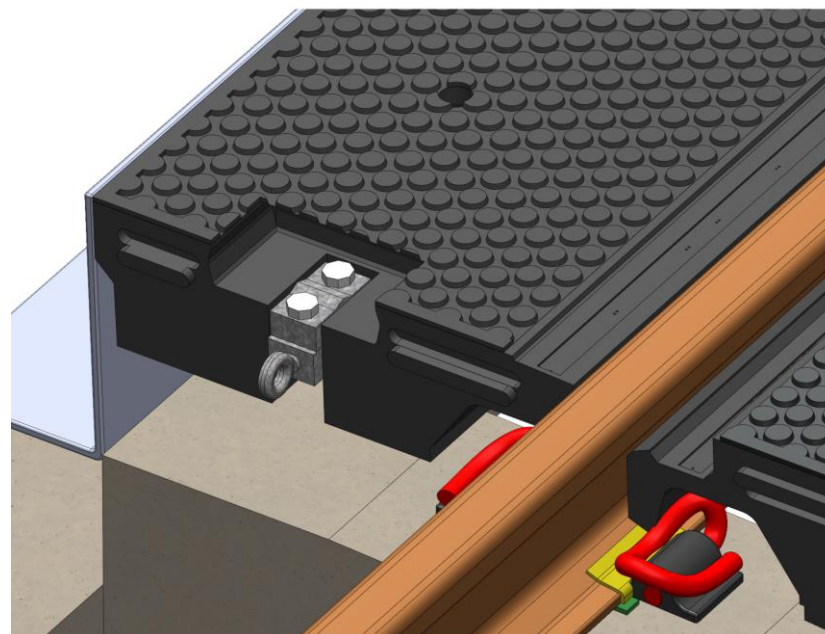


9.c. Rubber Edge Beam with Concrete Sill Beam

- Measure the distance and height for the ≥ 300 mm C50 dry concrete mix to locate the correct positioning of the Concrete Sill Beam and the Rubber Edge Beam.
- Install individually the Field Panels “B” working once again from the centre of the crossing, repeating Steps 3 to 5 until all the Field Panels of the crossing have been installed.

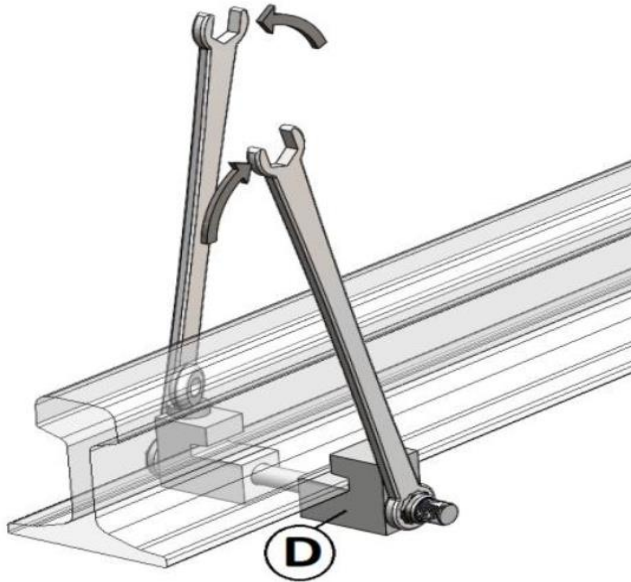


- Connect the LINK End Connectors “H” to all the end panels of the crossing.
- Place cover and bolts over the body of the LINK Connector.
- Screw Bolts tight Torque Setting 215Nm.



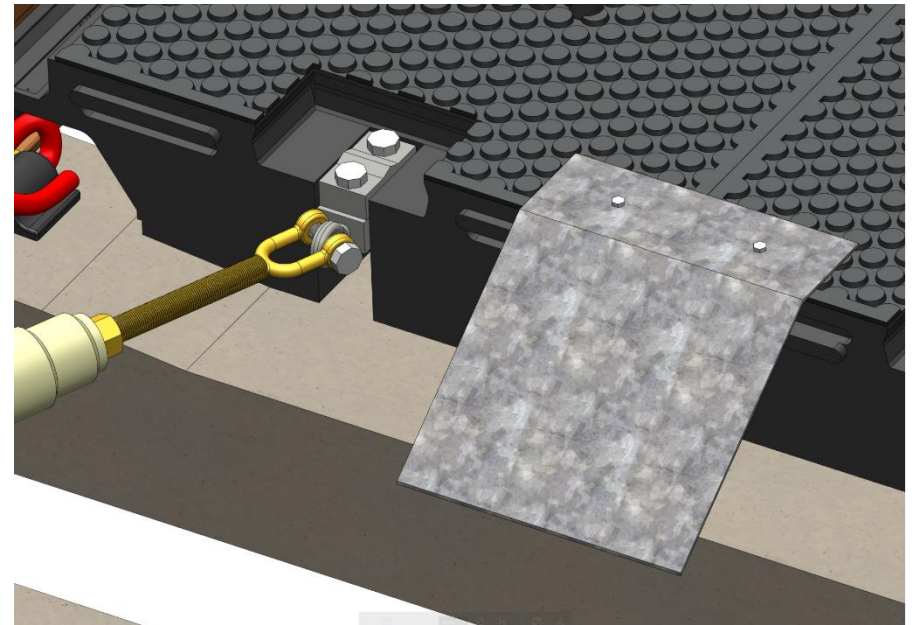
11

- Connect the End Restraint “C” to the LINK End Connector.
- Connect the other end of the End Restraint to the underside of the rail foot using the clamp provided “D” using Bolts “E”.



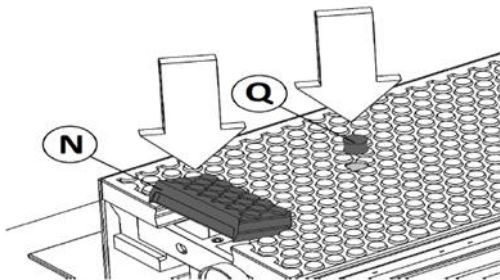
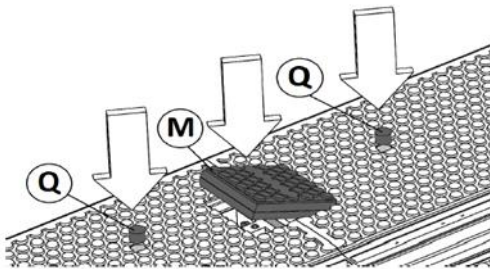
12

- Connect the Chain Guard “F” to each end of the Crossing



13

- Install the Cover Plate “M” to fill the hole for the LINK Connectors. Install the Rubber Plugs “L” into the Lifting Pin holes.



Rosehill Rail (a Division of Rosehill Polymers Ltd.)
Rosehill Mills
Beech Road
Sowerby Bridge
West Yorkshire
HX6 2JT - ENGLAND
Email : sales@rosehillrail.com
Tel. : +44 (0)1422 839 610
Fax : +44 (0)1422 835 78

