

UK

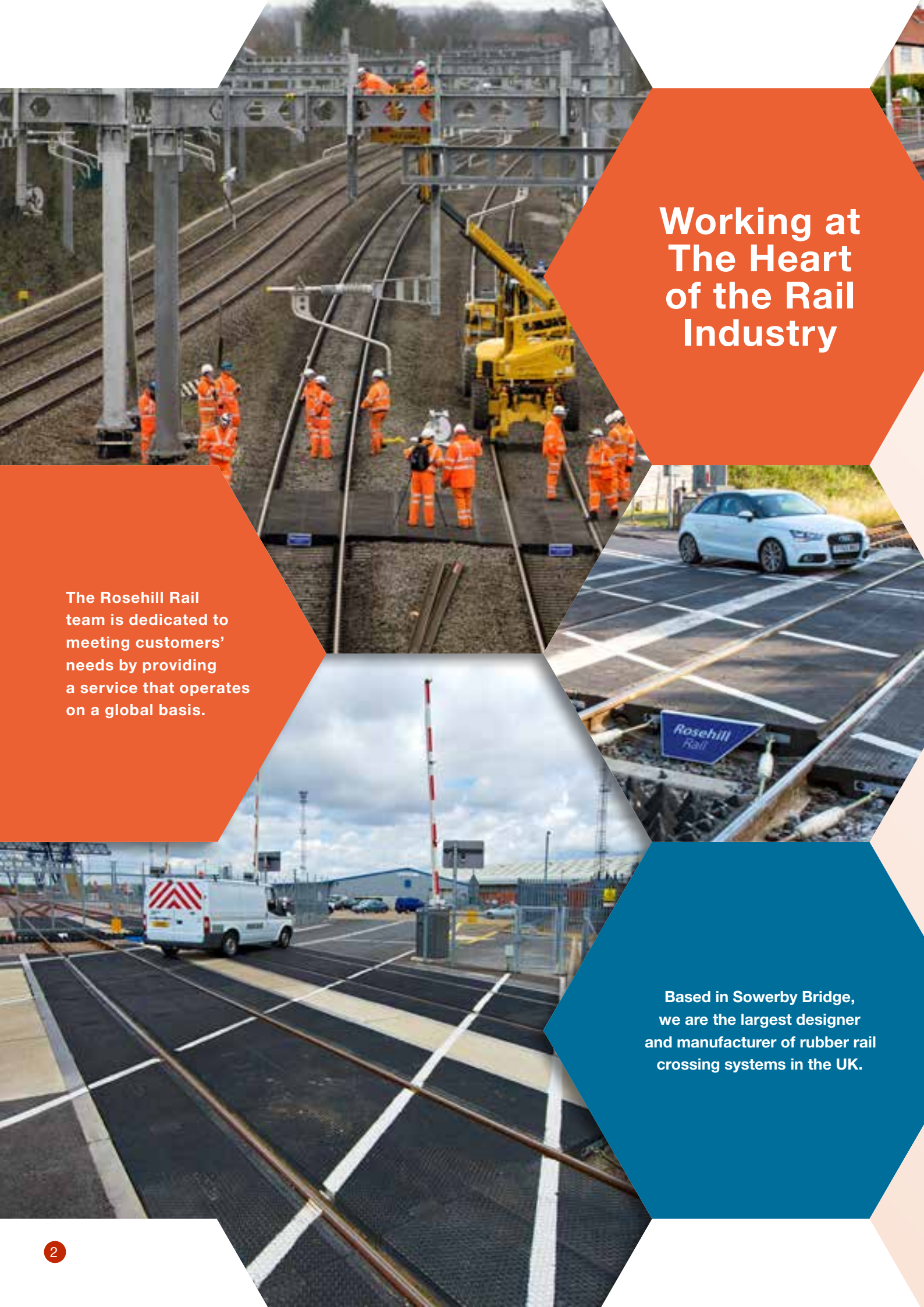


Rosehill Rail

RAIL CROSSING SYSTEMS

Complete
Turnkey Solutions

Made From
Solid Rubber



Working at The Heart of the Rail Industry

The Rosehill Rail team is dedicated to meeting customers' needs by providing a service that operates on a global basis.

Based in Sowerby Bridge, we are the largest designer and manufacturer of rubber rail crossing systems in the UK.



ROSEHILL CROSSING SYSTEMS - THE BENEFITS

✓ **Knowledge & experience**

Our rubber rail crossings have been an integral part of the Rail Industry for over 20 years. The support and service we offer is backed up by over 35 years experience in polyurethane and rubber technology.

✓ **Tailored solutions**

We provide crossing solutions that are perfectly tailored to any requirement. Moulded to fit each bespoke crossing permutation of gauge, rail, sleeper and fastener type, all panels are clearly marked for identification purposes.

✓ **Value for money**

Rosehill Rail rubber crossing systems are proven to be more cost effective than other modular systems and deliver significant cost savings.

✓ **High performance**

All Rosehill Rail panels are strong, robust and dependable. Our Connect panels were designed in conjunction with Network Rail for light or heavy traffic and now have enhanced product acceptance for high speed crossings.



✓ **Versatile systems**

Rosehill Rail manufacture crossing panels for any rail crossing situation including road, pedestrian, agricultural, RRAPs, tramways, depots and yards.

✓ **Simple to install**

Our rubber crossing systems have been engineered to facilitate quick installation and reduce track possession times.

✓ **No special tools required**

Tool kits and lifting pins can be supplied.

✓ **Ideal for inspections**

Individual panels can be removed in under a minute, or replaced without dismantling the whole crossing.

✓ **Solid rubber - no voids**

Rosehill Rail panels are made of solid rubber all the way through. Tough and durable, they will outperform any other rubber crossing system in long-term use.

✓ **Sustainable products**

Made from 100% recycled tyre rubber and bonded using our innovative cold cure technology ensures a long life.

NETWORK RAIL PRODUCT ACCEPTANCE CODES

CONNECT ROAD CROSSING	INTERLOCKING RRAP SYSTEM	BASEPLATED CROSSING	TRACK ACCESS POINTS	PEDESTRIAN CROSSING	AGRICULTURAL CROSSING	ANTI-TRESPASS PANELS	RUBBER EDGE BEAM
PA05/04429	PA05/04429	PA05/00047	PA05/03302	PA05/04986	PA05/04985	PA05/01732	PA05/00047



CONNECT ROAD CROSSING SYSTEM

Developed in
conjunction with

NetworkRail

In use with rail
authorities worldwide,
our high performance level
crossing system has been
specifically developed
for roads with light or
heavy traffic.





Dimensional stability is maintained at any angle and in all operating conditions, ensuring crossing panels cannot become dislodged.

On sleepers at 600mm centres, each crossing panel is securely fixed to the next by Rosehill Rail's **CONNECT** system, ensuring the safest crossing possible.

Solid rubber panels can be individually removed or replaced without needing to dismantle the whole crossing.

rosehillrail.com





INTERLOCKING RRAP SYSTEM

A heavy duty modular solution, the Interlocking RRAP system is designed specifically to accommodate irregular sleeper spacing, making it ideal for permanent, semi-permanent and temporary RRAPs.

SLEEPER SPACING INDEPENDENT



With steel rods moulded into each solid rubber panel, the Interlocking RRAP system is ideal for getting RRVs and other heavy machinery onto the track again and again.

Each individual panel is manufactured to fit the specific rail, sleeper and fastener type to ensure the perfect fit.

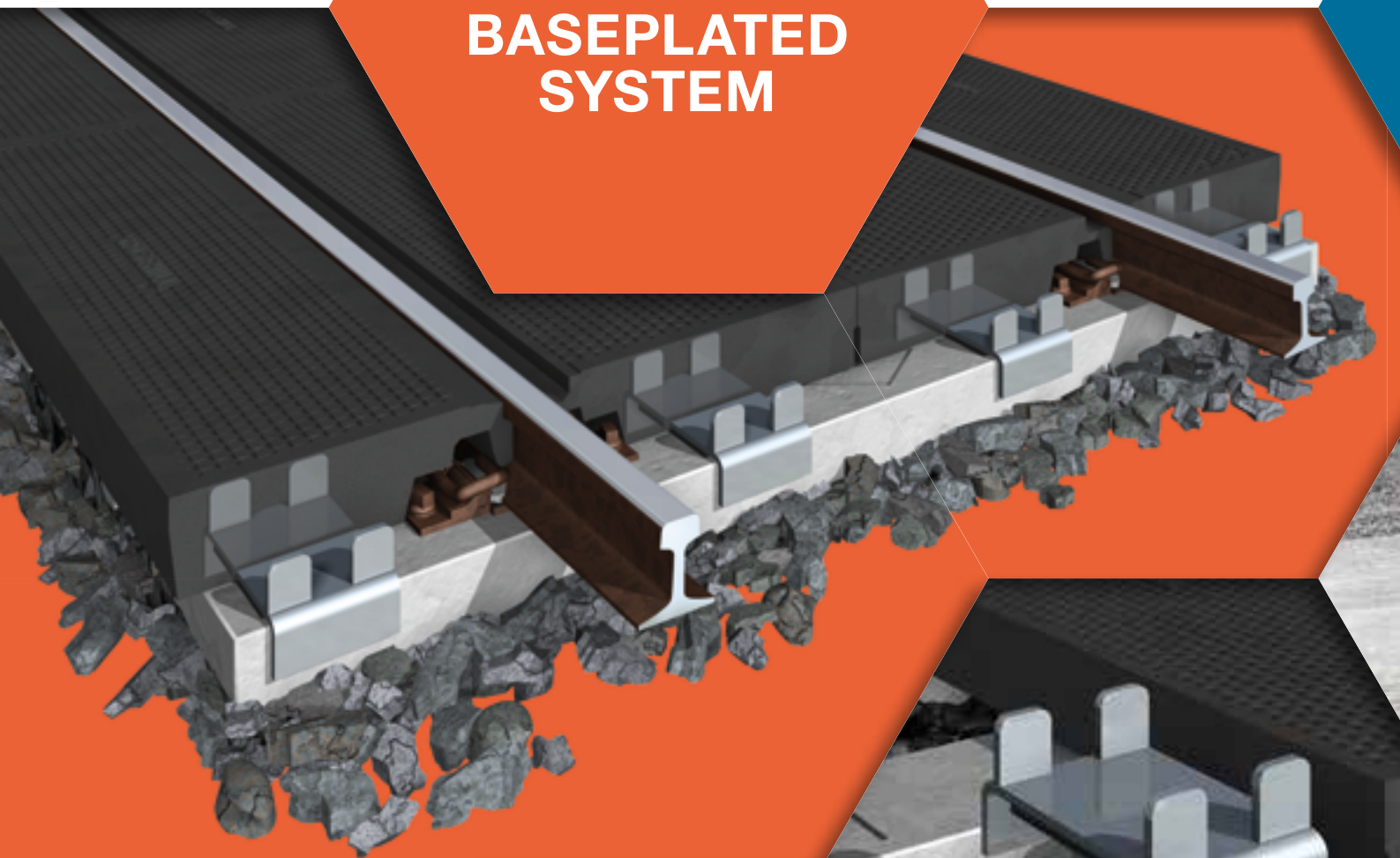
Gauge and field panels are securely fixed using Rosehill Rail's locking plates, linking the panels together and ensuring panels cannot become dislodged.

Quick and easy to install, the system reduces possession times and delivers significant cost savings compared to other modular systems.

rosehillrail.com



BASEPLATED SYSTEM



The Baseplated System is easy to install and suitable for a wide range of applications.



BASEPLATED RRAP



The ideal way to mount and dismount road/rail maintenance vehicles, Rosehill RRAP's are perfect for temporary, semi-permanent and permanent access points.

Where two separate tracks are fitted with RRAP panels, it is possible to make one continuous deck by using Baseplated infill panels between the two tracks.

Single panels can be removed and replaced from anywhere within the crossing area.

Easy to install baseplates connect the panels together.



rosehillrail.com



BASEPLATED PEDESTRIAN CROSSINGS

Rosehill Rail Pedestrian crossings (PED's) are the versatile crossing solution for public footpaths and walkways. They provide the perfect safe crossing for pedestrians and cyclists.

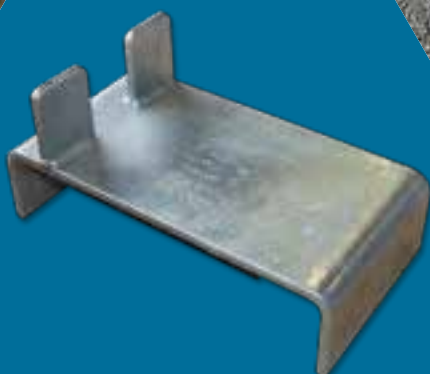




Quick and easy to install, the durable panels are ideal for authorised walking routes in sidings, wash sheds, depots, yards, freight terminals and industrial plants.

Applications include:
public footpaths, foot crossings
on main line railways and light rail,
depots and yards.

Single panels can be removed
and replaced from anywhere
within the crossing area.



rosehillrail.com



OCCUPATIONAL & AGRICULTURAL CROSSINGS

The Baseplated crossing system is ideal for agricultural traffic, livestock and light to medium vehicular traffic.

The cost-effective solution for farm crossings and entrances to commercial yards.

Ideal for user worked crossings (UWCs) and footpath and bridleway crossings.

Easy to install baseplates connect the panels together.

DEPOTS & YARDS



Made of solid rubber with no voids or metal parts inside, Rosehill Baseplated panels can be cut-to-fit around switches, crossings and other track infrastructure.

The Baseplated crossing system can be precision fitted to complex points and turnouts and adapted to bespoke site specific requirements.

It can be cut-to-fit around fishplates, check rails (single and double) turnouts and in rail sheds and depots.

Outperforms other crossing systems.

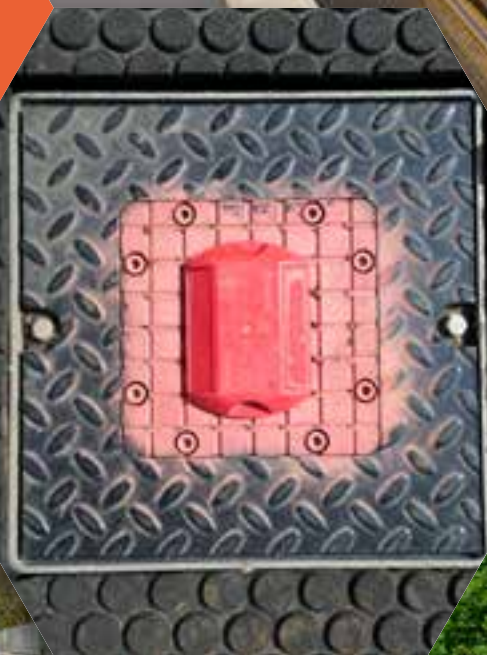
The only crossing system available for cut-to-fit applications.

rosehillrail.com



TRAMWAYS & LIGHT RAIL

The Baseplated system is easily adapted to fit tram stops, depots, complex crossovers and turnouts. Solid rubber panels can be cut-to-fit on-site to fit around existing infrastructure.





Outperforms other rubber crossing systems in long-term use at road and pedestrian crossings, tram stops and depots.

Panels can be manufactured to fit around tight curves which is especially useful for tramway applications.

Individual panels can be removed in under a minute, or replaced without dismantling the whole crossing.



ANTI-TRESPASS PANELS

Proven to work
as an effective
deterrent on-track
and off-track.



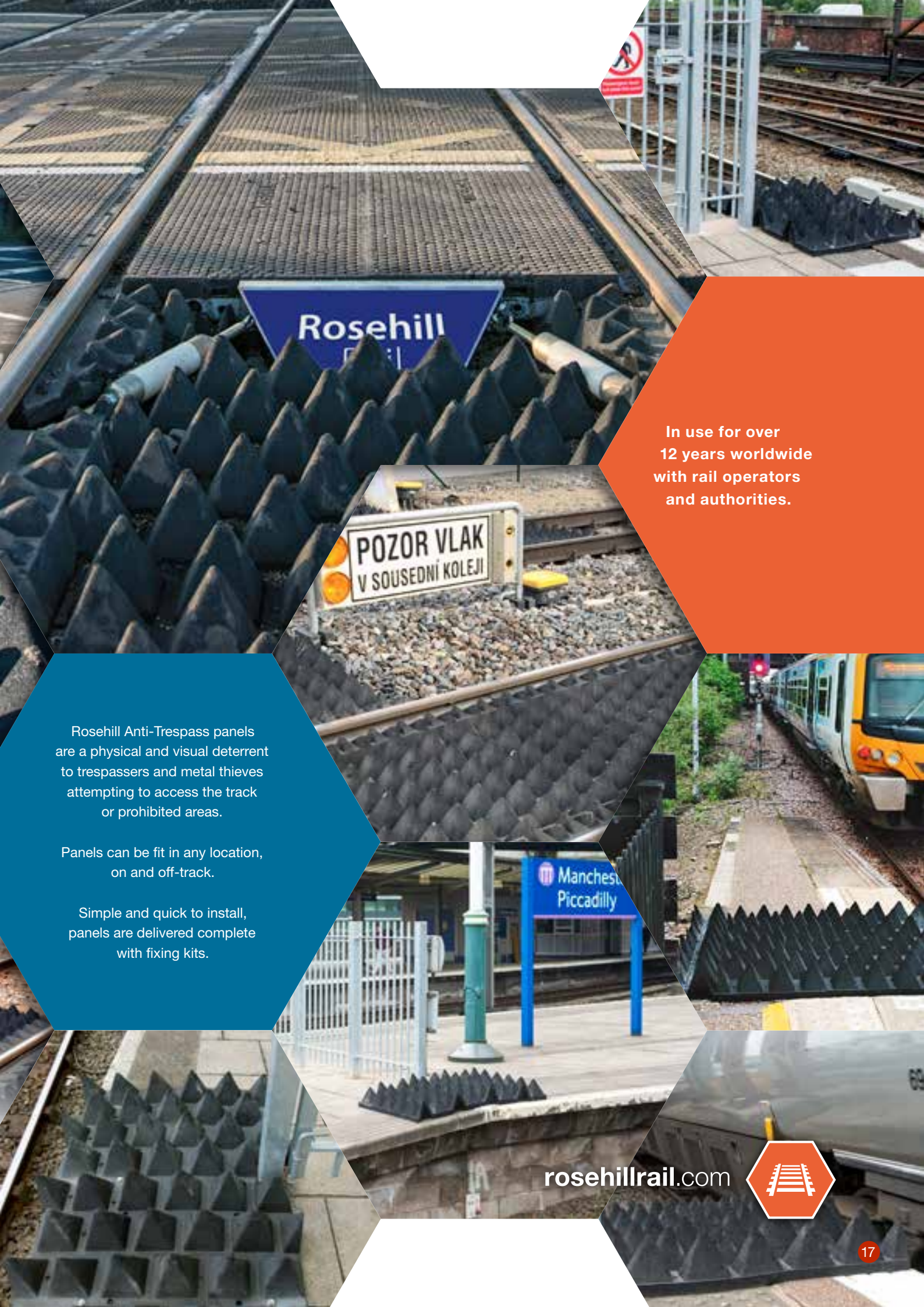
DOUBLE FLANGE



SINGLE FLANGE



FLANGELESS



In use for over
12 years worldwide
with rail operators
and authorities.

Rosehill Anti-Trespass panels
are a physical and visual deterrent
to trespassers and metal thieves
attempting to access the track
or prohibited areas.

Panels can be fit in any location,
on and off-track.

Simple and quick to install,
panels are delivered complete
with fixing kits.

rosehillrail.com



RUBBER EDGE BEAMS

**Won't crack,
or spall**

Installed in
the same way
as concrete.

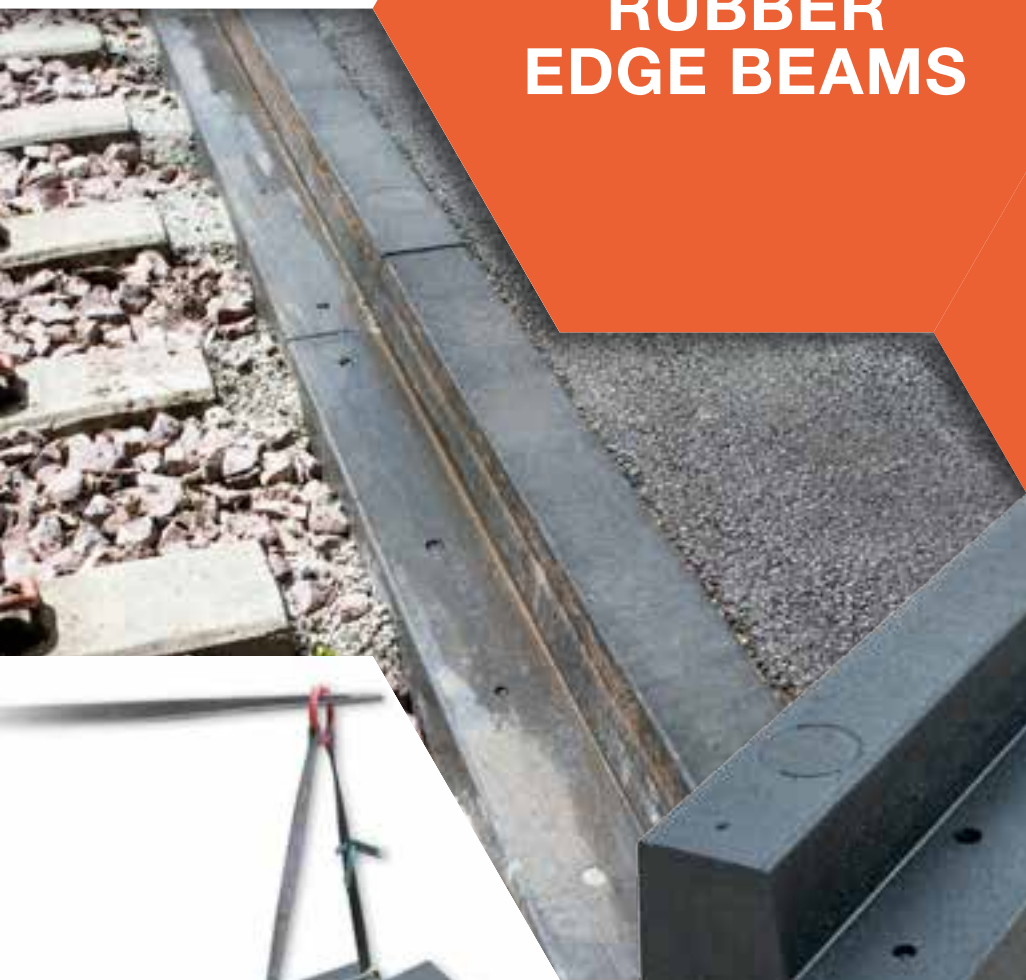
Lifting holes are positioned to
aid the installation process and
minimise installation times.

Heavyweight rubber edge beams
will withstand many years of heavy
vehicular traffic and climate conditions,
with little, if any, maintenance.

The genuine alternative to concrete.

Standard 1.8 metre lengths offer massive weight
savings and are easy to fit with our lifting pins.

Beams can be delivered
efficiently, handled and
stacked without the problems
associated with brittle concrete.



ROSEHILL LIFTING PINS

Used by installers worldwide.

Suitable for all Rosehill Rail crossing panels and rubber edge beams.

Tested to a safe working load of 350kg, each set of lifting pins is supplied with the appropriate certification.

Two sets can be used in tandem to install gauge panels simultaneously, helping to reduce possession times.



LINE MARKING PRIMER SYSTEM

Single component primer specially formulated by Rosehill Polymer's chemists.

Adhesion enhancer that improves the adhesion of commercially approved marking paints.

Fast reacting, cures in minutes.

More durable than acrylic based products.



rosehillrail.com





Rosehill Rail

Rosehill Rail is a division of the Rosehill Polymers Group

**For International and UK sales enquiries,
please contact our Rail Team.**

Phone +44 (0)1422 317 473

Fax +44 (0)1422 316 952

Email sales@rosehillrail.com

Beech Road

Sowerby Bridge

West Yorkshire

HX6 2JT

United Kingdom

www.rosehillrail.com

Technical Support

Email support@rosehillrail.com



member of the
 railalliance

